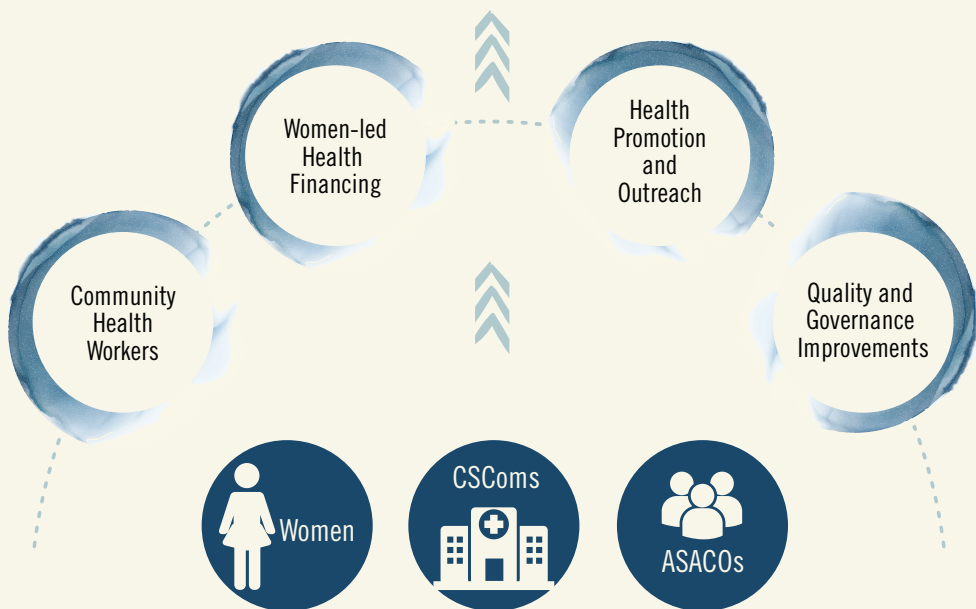
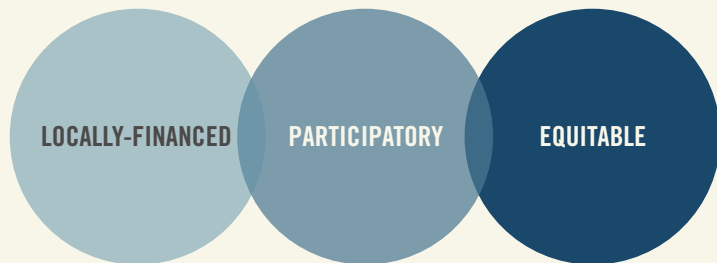


STRATEGY

A strong, resilient community health system that is:



Invest in local resources and build capacity within the community

OUTCOMES



Improved community governance of CSComs by their community



Enhanced quality and availability of community-level MRNCH services



Increased timely care-seeking and completion of all RMNCH care



Eliminated financial barriers to healthcare

IMPACT

Mothers and children have access to quality RMNCH care in their communities

Improved health of mothers, newborns and children

STRATEGY

Locally- financed

Removing financial barriers increases access to care, so we help communities mobilize local resources so mothers and children reach the care they need quickly and health centers have the revenue to provide high-quality, patient-centered care in the long-term.

Participatory

The community health system in Mali depends on the participation of community members - and we help them ensure that their local institutions are democratic, transparent, and responsive to the needs of their communities.

Equitable

The path to achieving healthcare for all begins by serving the women and children most in need - and putting them first. We focus on where the needs are greatest and the resources are most scarce.

Community Health Workers

We support paid, supervised and trained CHWs who provide health education, monitor health and make referrals to CSComs, and ensure families understand treatments and follow-ups.

Women-led Health Financing

Based on the traditional tontine, we help women make interest- free loans available to one another to pay for preventive and curative health costs.

Health Promotion and Outreach

We ensure that mothers, caregivers and community members have the information they need to maintain good health, or to seek care when needed.

Quality and Governance Improvements

We help teams made up of community members, ASACO members and CSCom staff to improve quality of services and good governance in their health centers.

OUTCOMES

Mali Health uses a series of process and outcome indicators to monitor and evaluate the impact of our work. Listed here are key outcome indicators and the top indicator for our entire organization is the elimination of preventable maternal, neonatal and child deaths.

IMPACT

Access

We aim for the timely and equitable use of affordable, accessible and acceptable healthcare services at the community level.

Quality

We agree with the WHO definition that quality care is safe, effective, timely, efficient, equitable and people-centered. Quality care treats mothers and children with respect and dignity, is responsive to the needs of patients and communities, and is based on the latest evidence and best practices.

RMNCH – Reproductive, Maternal, Neonatal and Child Healthcare

ASACOs – Associations Santé Communautaire, Community Health Associations

CSComs – Centres de Santé Communautaire, Community Health Centers



MALI HEALTH

www.malihealth.org

Mali Health improves maternal and child health in Mali by helping mothers and children access high-quality primary healthcare and by helping communities to strengthen their local health systems.